

# MV SP VENTURE



## GENERAL PARTICULARS

Name	MV SP VENTURE
Flag	Bahamas
Call-sign	C6DF3
IMO no.	9201839
Port of registry	Nassau
Year built / Shipyard	1999
Ice-class	N/A
Registered Owner	BBS Bulk VIII
P&I	Gard
Class	DNV GL

## VESSEL PARTICULARS

LOA	89,75m
LBP	
Breadth Mld	13,90m
Breadth Ext	13,90m
Depth Mld	
Draft Summer	6,36m
Draft Winter	6,36m
Ballast draft	
GT	2829
NT	1548
Displacement	
Deadweight	4940 mt
DWCC Summer	4700 mt
DWCC Winter	4600 mt
Airdraft	21,50m
Distance WLTHC	
Immersion	

## COMMUNICATION

E-mail	<a href="mailto:spventure@misje.no">spventure@misje.no</a>
Phone	+47 90820824
Inmarsat	<a href="mailto:431103262@inmc.eik.com">431103262@inmc.eik.com</a>

## HOLD PARTICULARS

No. Of holds / hatches	1 hold / 1 hatch
Hold(s) capacity	5600 CBM / 198.000 cbft
Box shaped	YES
Length of hold	62,88m
Width of hold	11,00m
Height of hold	8,35m
Type of hatches	Coops en Nieborg pontoon system
Hatch dimension (LxW)	62,88m x 11m
Number of tweendecks	N/A
Number of bulkheads	2
Movable: YES / NO	YES
Strongbeam	YES
Cement holes	YES
Tank top / hatch cover strength	
Tweendeck strength	N/A
Ventilation (air changes/hour)	

## TECHNICAL PARTICULARS

Main Engine	MaK 6M25 1499 kw
Speed loaded	10,5 - 11,00 knots
Speed ballast	10,5 - 11,50 knots
Fuel type Main Engine	MGO
Fuel type Aux. Engine	MGO
Bowthruster fitted	YES
Sternthruster fitted	NO
Bunker capacity	
Freshwater capacity	
Ballastwater capacity	
Lub oil capacity	
Container capacity	N/A
Consumption at sea	Abt 5,0 t MGO per day
Consumption in port	Abt 0,5 t MGO per day

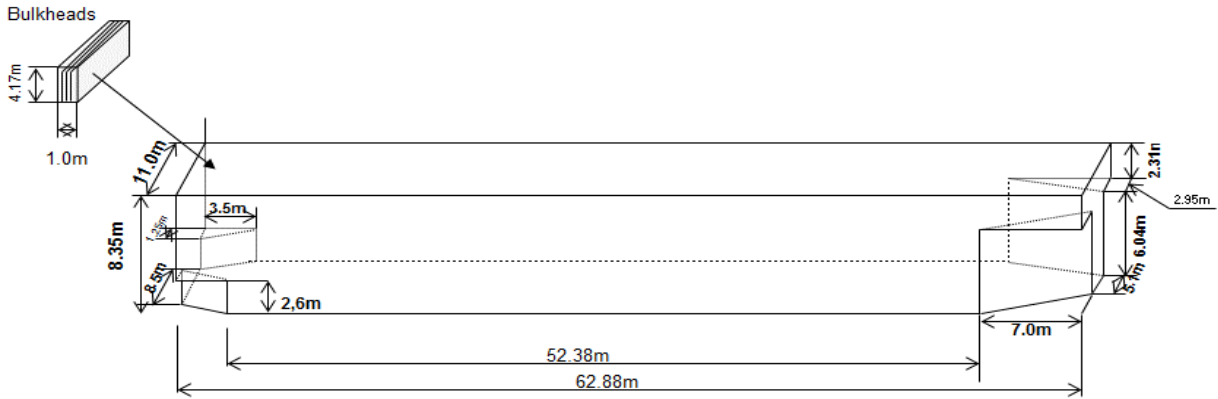
All details about and without guarantee



**Misje Rederi AS**

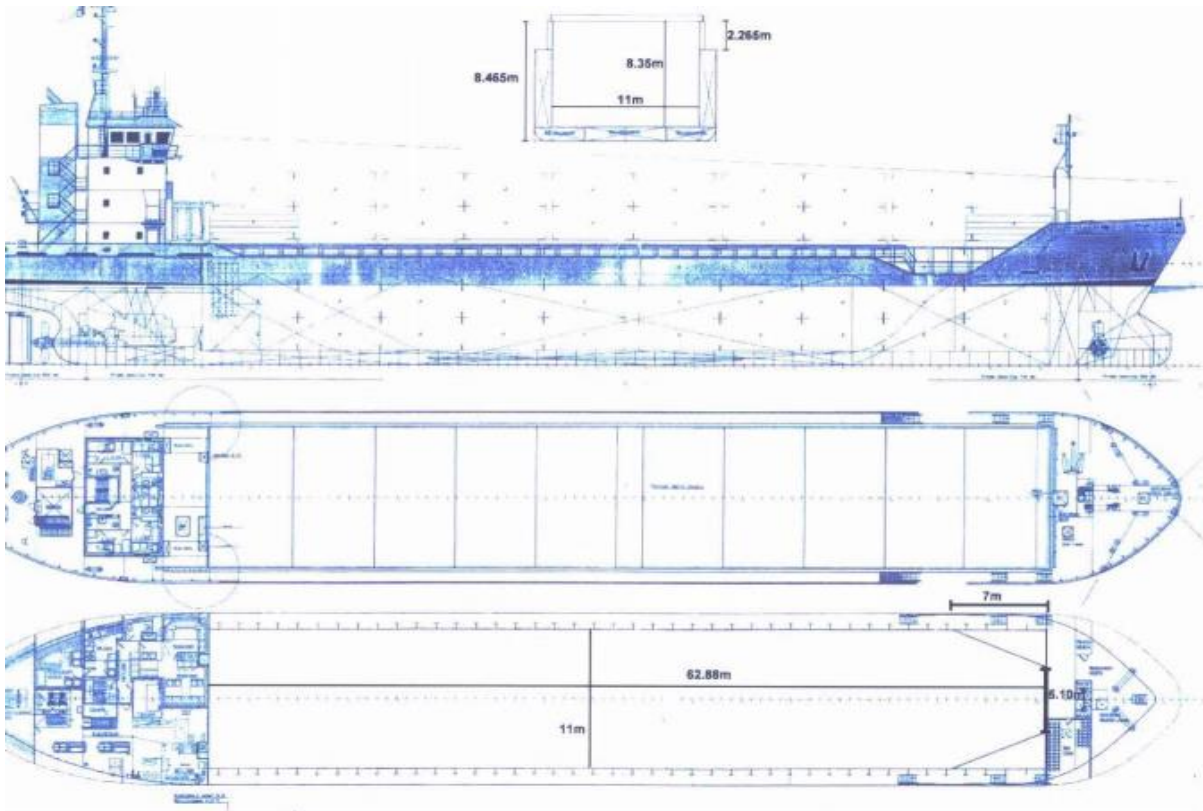
# HOLD AND HATCH DRAWINGS

## DIMENSIONS OF THE HOLD AND BULKHEAD POSITIONS m.v. SP VENTURE



From deck level to height 2.6m = 4 stacks x 85 pcs = 340 pcs  
 From. height 2.6m to height 6.04m = 6 stacks x 76 pcs = 456 pcs  
 From height 6.04m to height 8.35m = 4 stacks x 76pcs less 8 pieces in the upper stack = 296 pcs

**Total : 1092 pcs**



All details about and without guarantee



**Misje Rederi AS**