

## MV SUNMI



### GENERAL PARTICULARS

Name	MV SUNMI
Flag	Bahamas
Call-sign	C6WS3
IMO no.	9073581
Port of registry	Nassau
Year built / Shipyard	1993 / Bodewes Scheer
Ice-class	E-ice strengthened
Registered Owner	Misje Bulk AS
P&I	Gard
Class	DNV GL

### VESSEL PARTICULARS

LOA	90,46m
LBP	84,60m
Breadth Mld	13,20m
Breadth Ext	
Depth Mld	7,10m
Draft Summer	5,60m
Draft Winter	5,47m
Ballast draft	3,50m
GT	2825
NT	1604
Displacement	5436 mt
Deadweight	4148 mt
DWCC Summer	4030 mt
DWCC Winter	3900 mt
Airdraft	27,5m in Ballast
Distance WLTHC	6,20m in Ballast
Immersion	10,80 t/cm

### COMMUNICATION

E-mail	<a href="mailto:sunmi@misje.no">sunmi@misje.no</a>
Phone	+47 941 56 262
Inmarsat	430993712@inmc.eik.com

### HOLD PARTICULARS

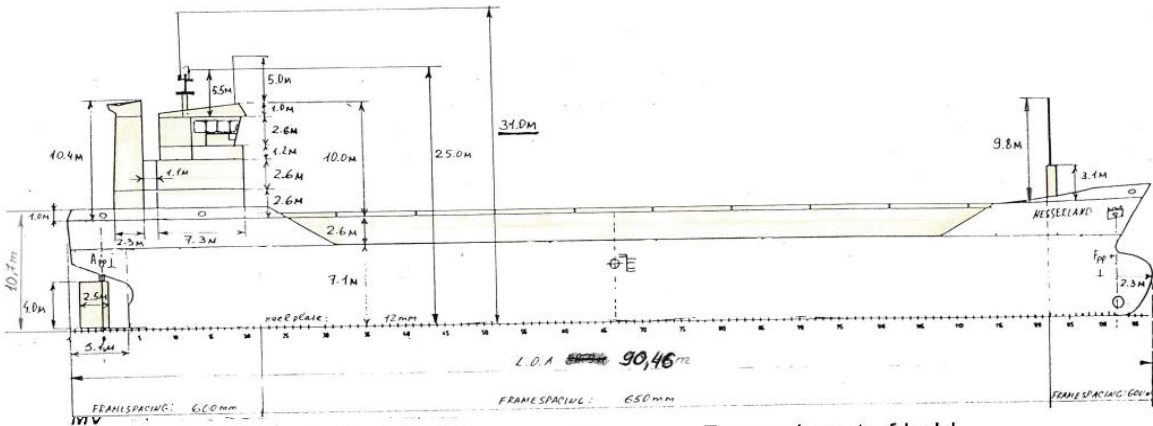
No. Of holds / hatches	1 hold / 1 hatches
Hold(s) capacity	5799 CBM / 204.762 cbft
Box shaped	YES
Lenght of hold	64,60m
Width of hold	10,58m
Height of hold	8,51m
Type of hatches	Coops en Nieborg pontoon system
Hatch dimension (LxW)	60,40m X 10,60m
Number of tweendecks	N/A
Number of bulkheads	1
Movable: YES / NO	YES, 6 positions
Strongbeam	YES
Cement holes	YES
Tank top / hatch cover strenght	15,0t pr m2 / 1,6t pr m2
Tweendeck strenght	N/A
Ventilation (air changes/hour)	Yes

### TECHNICAL PARTICULARS

Main Engine	WARTSILA 6SW 280 1840 kW
Speed loaded	9,50 - 10,00 knots
Speed ballast	10,00 - 11,00 knots
Fuel type Main Engine	MGO
Fuel type Aux. Engine	MGO
Bowthruster fitted	YES
Sternthruster fitted	NO
Bunker capacity	232 m3
Freshwater capacity	51 m3
Ballastwater capacity	1805,04 m3
Lub oil capacity	14,44 m3
Container capacity	N/A
Consumption at sea	Abt 4,90 t MGO per day
Consumption in port	Abt 0,40 t MGO per day
Deballasting takes	min. 8 hours

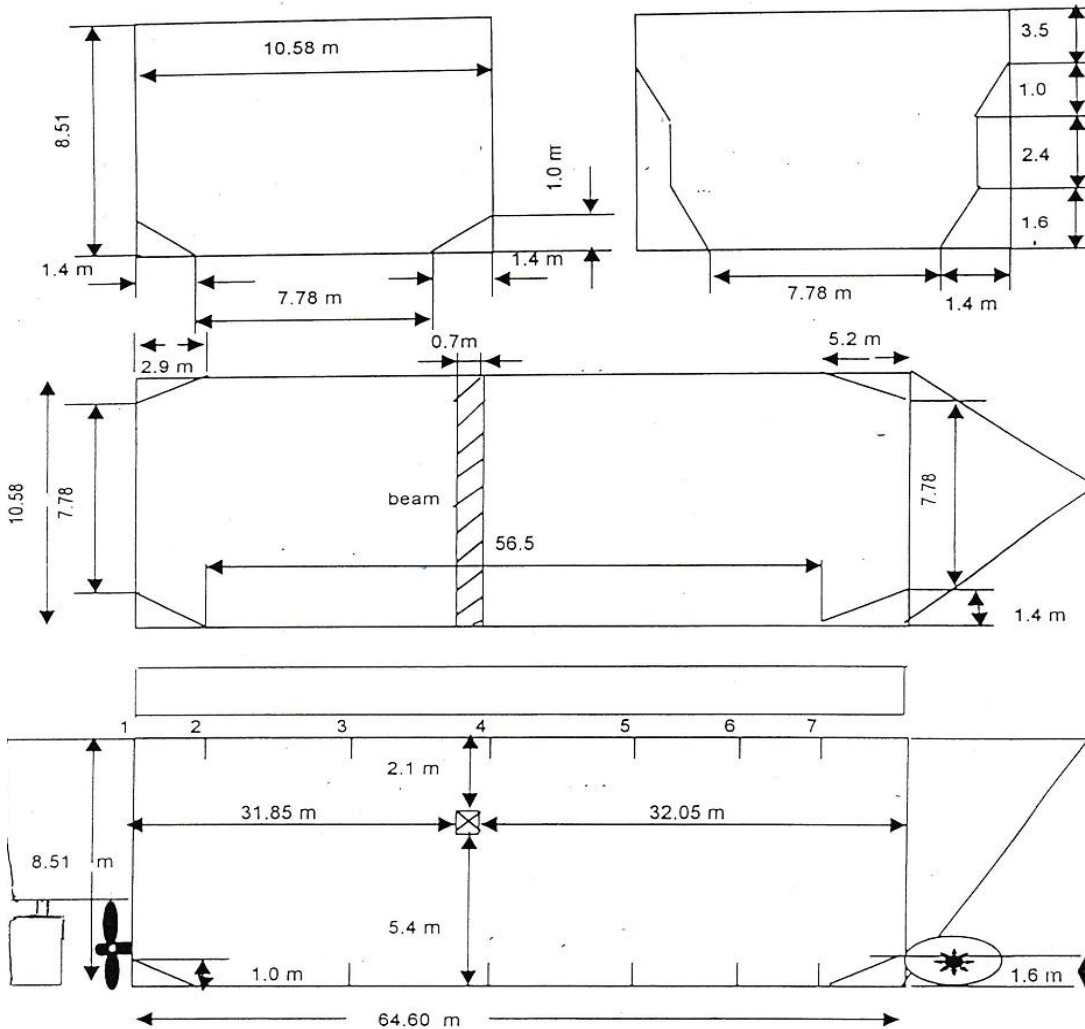
All details about and without guarantee

# HOLD AND HATCH DRAWINGS



Aft part of hold

Forward part of hold



All details about and without guarantee